

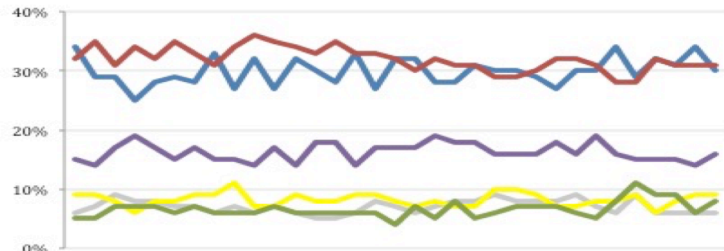
THE ASHCROFT NATIONAL POLL 16 FEBRUARY 2015

1,004 adults were interviewed by telephone between 13 and 15 February 2015. Results have been weighted to be representative of all adults in Great Britain. Half of the interviews were conducted by landline and half by mobile phone. Results are weighted by recalled past vote at the last general election and stated likelihood to turn out at the next. A proportion of those who don't know or refuse to say how they will vote are re-allocated to the party they voted for at the 2010 general election. Full data tables are available at www.LordAshcroftPolls.com.

1. If there were a general election tomorrow, which party would you vote for?

[Changes since 6 – 8 Feb]

Conservative	30% (-4)
Labour	31% (-)
Liberal Democrats	9% (-)
UKIP	16% (+2)
Green	8% (+2)
Others	6% (-)



Ashcroft National Poll, May 2014 – February 2015

2. The next general election will take place on May 7th 2015. When the general election comes, will you definitely vote [for the party you named] or might you end up voting differently?

	%	ALL	Men	Women	Con voters	Lab voters	LD voters	UKIP voters
Will definitely vote that way	59	65	53	64	58	45	72	
Might end up voting differently	41	35	47	36	42	55	28	

3. How positive or negative do you feel about each of the following, using a scale from -100 (very negative) to +100 (very positive), where zero means neither positive nor negative?

% [changes since 17 Nov]	ALL	Con voters	Lab voters	LD voters	UKIP voters	Swing voters*
THE LABOUR PARTY	-2.74 (-0.65)	-33.13	+52.03	-0.42	-31.17	+5.03
David Cameron	-6.21 (-4.24)	+55.50	-27.32	+1.46	-14.97	-4.54
THE CONSERVATIVE PARTY	-9.23 (-4.41)	+54.62	-36.48	-13.87	-18.82	-8.14
Ed Miliband	-15.38 (-0.35)	-46.68	+35.28	-18.73	-38.34	-8.99
THE LIBERAL DEMOCRATS	-16.45 (+1.65)	-18.51	-14.16	+48.85	-31.87	-6.45
Nick Clegg	-19.12 (-3.38)	-16.75	-17.45	+42.90	-37.46	-10.65
UKIP	-26.46 (-6.46)	-32.70	-53.58	-50.99	+67.02	-26.13
Nigel Farage	-27.66 (-5.86)	-31.76	-55.46	-50.09	+61.95	-28.88

4. Thinking about the coalition government since 2010, made up of Conservatives and Liberal Democrats, do you think the Liberal Democrats have had too much influence over the decisions of the government, or not enough influence, or about the right amount of influence?

	% [changes since 29 Sept]	ALL	Con voters	Lab voters	LD voters	UKIP voters	Swing voters*
The Lib Dems seem to have too much influence within the coalition government	13 (-3)	20	10	-	22	8	
The Lib Dems seem to have the right amount of influence within the coalition	30 (-3)	49	22	32	30	31	
The Lib Dems do not seem to have enough influence within the coalition	48 (+8)	28	64	64	41	54	
Don't know	9 (-1)	2	4	4	8	8	

* Swing voters don't know how they will vote or may change their mind.